

Installation Instructions
for the
Manufacturer
of the End Product
MULTIMAT B23R
Drive System



Contents

	page
General Information.....	2
Designated Use.....	3
Prerequisites.....	3
Getting to Know the System.....	4
Fitting.....	7
Operation.....	8
Maintenance and Repairs.....	9
Type Label and Seal.....	10
Trouble-Shooter's Guide.....	11
Cleaning and Care.....	12
Manufacturer's Declaration, Declarations of Conformity.....	13

General Information

These instructions are intended for the manufacturer of the end product and are not designed for passing on to the operator of the end product. With regard to the specialist information contained herein, these instructions can well serve as a basis for drawing up the instructions for the end products.

It is essential to note the information contained in these instructions! In doing so, you can prevent mistakes being made in installing or connecting the system which could result in

- **injury and accidents as well as**
- **damage** to the drive system or the end product.

Use only DEWERT drive control units!

The DEWERT drive control unit incorporate an earth-free circuit which is isolated from the supply mains by reinforced insulation or double insulation.

DEWERT **accepts no liability** for damage caused as a result of ...

- non-observance of these instructions,
- alterations to the product not approved by DEWERT or ...
- the use of spare parts not manufactured or approved by DEWERT- these may not ensure adequate safety!

Due to the policy of ongoing product improvement, DEWERT reserves the right to carry out technical changes at any time without prior notification!

1. Designated Use

The **MULTIMAT B23R** drive system is **designed for installing in end products...**

- for the motorised adjustment of movable furniture parts **using suitable fittings/ mountings.**

The **MULTIMAT B23R** drive system is **not intended for use...**

- in the proximity **high-frequency surgical equipment** and **defibrillators**,
- in an environment where **flammable** or **explosive** gases or vapours (e.g. anaesthetics) are likely to occur,
- in a damp environment, i.e. outdoors nor in beds intended for cleaning in wash tunnels,
- in applications where unintentional movements cannot be stopped by adequate actions,
- as an adjustment drive for young children or the infirm.

2. Prerequisites

The installation steps described in these instructions must be performed by a **fully trained electrical engineer.**

- This being the case, you should never carry out this work **yourself** unless you are a **qualified electrical engineer** or
- you should **entrust** this work to suitably **qualified persons** only.

Conformity in accordance with EC Directives

The drive system is supplied ex factory as a **machine not ready for use** in accordance with the EC "Machinery" Directive. In other words, you may not put the drive system into operation until you have met the **safety** objectives of the "Machinery" Directive and issued a corresponding **Declaration of Conformity!**

The drive system with DEWERT controls meet the safety objectives of the EC Directives concerning **"Low Voltage"** and **"Electromagnetic Compatibility (EMC)"**.

The drive is **not a medical product** - for installing into same, manufacture in **conformity** with the EC Directive for "Medical Products" or other regulations is the responsibility of the **manufacturer of the end product.**

MULTIMAT B23R

3. Getting to Know the System

The **MULTIMAT B23R** drive system is intended for the German market and complies with the Law applicable in Germany in implementation of relevant EC Directives.

a) variants

Besides MULTIMAT B23R, to be connected with a MBK control unit that is equipped with connectors for external limit switches, two further variants are available:

- MULTIMAT B23R Memory, to be connected with an adequate memory control unit in order to realise the "virtual limit switch" or
- MULTIMAT B23R with integrated memory control unit.

For your choice and configuration of adequate system components we are ready to serve you.

a) Technical Data

Rated voltage.....	24 V DC
Power consumption with max. torque.....	approx. 5 A DC
Max. permissible torque.....	5Nm
Operating mode ¹⁾ with max. torque.....	Intermittent duty 2 min./18 min.
Protection classification.....	III
Noise level.....	≤ 65 dB(A)
Drive type.....	Single drive
Max. revolutions per minute ²⁾	65 r/pm, 75 r/pm, 120 r/pm with 24 VDC
Torque transfer.....	rotational hexagon steel shaft SW7 / SW10
Protection category.....	IP20
Colours	black

Dimensions and Weights

Length x width x height of the drive.....	min. 152 x 165 x 85 mm (B23R)
Length x width x height of the drive.....	min. 152 x 185 x 85 mm (B23R Memory))
Length x width x height of the drive.....	min. 152 x 205 x 85 mm (B23RC)
Weight.....	approx. 1.5 kg (B23R, depending on version)

Ambient Conditions

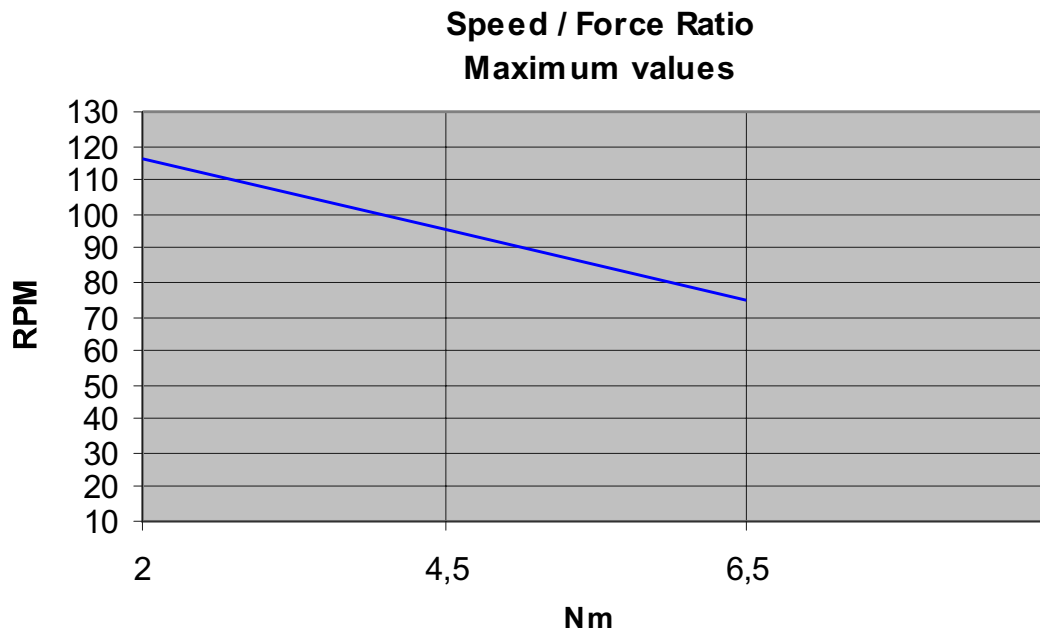
Room temperature.....	from +10° to +40° C
Relative humidity.....	from 30% to 75%
Atmospheric pressure.....	from 700 hPa to 1060 hPa

1) Operating mode = **intermittent duty 2 min./18 min.**, i.e. run for a maximum of 2 min. with max. torque ,then observe **rest period** of 18 min. Operational failure could otherwise result.

2) Depending on the drive configuration with constantly 24 V and no load.

Example

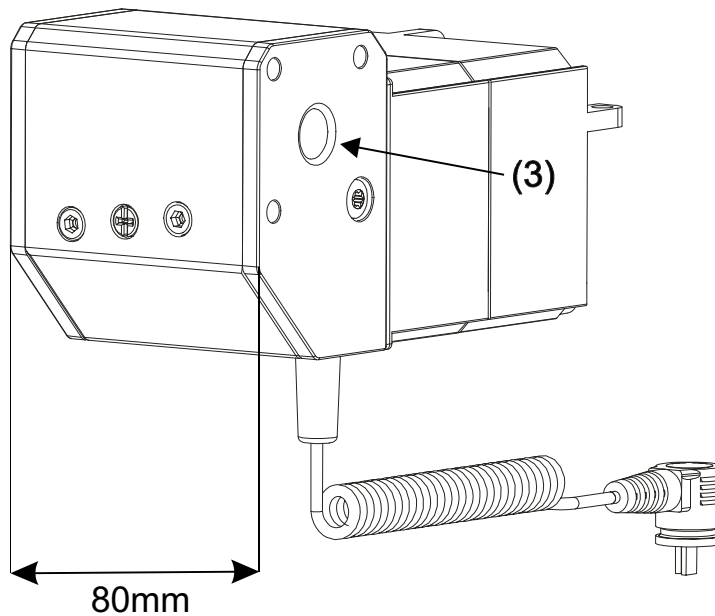
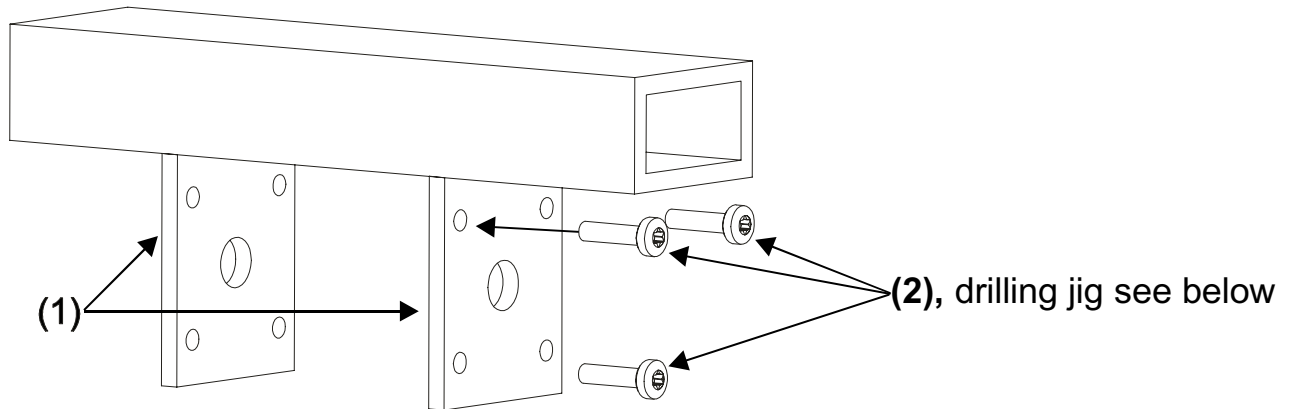
The adjustment speeds actually reached can be less depending on the drive version and type of controls.



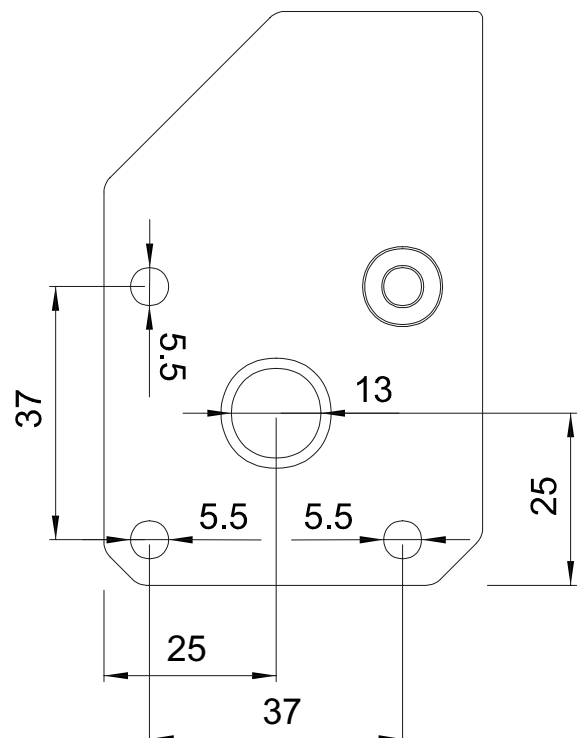
The measurement curves shown were established in our laboratory using suitable transformers and drive components. They represent the maximum driving power that can be achieved using suitable DEWERT control components. We will be happy to assist you in designing your own individual drive system.

MULTIMAT B23R

Assembly of the MULTIMAT B23R Drive system



The drilling jig makes it easier for you to install the Multimat B23R. You can use it mirror-inverted for both sides. The B23R is fastened on both sides using 3 thread rolling screws of the M05x20 type (DIN 7500) per side.



4. Fitting

Caution!

Only ever connect or disconnect electrical components when they are voltage-free.

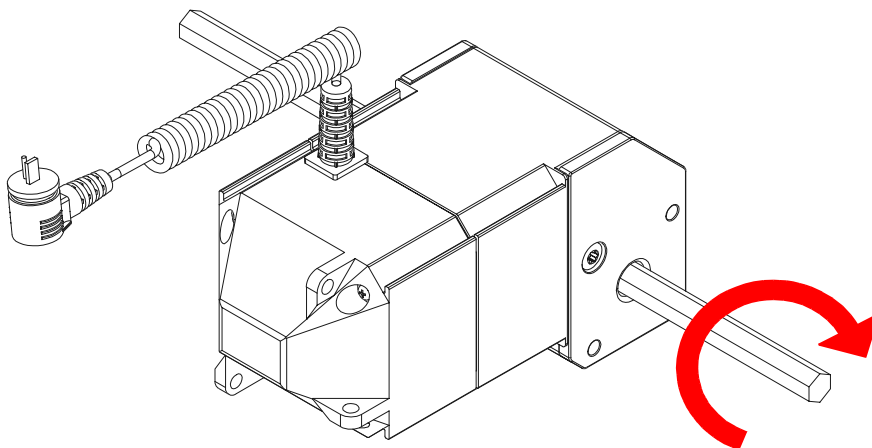
a) Installation

Installation of the drive is only possible in basic position of application!

Best installation is via two plates (1) with a distance of 80 mm to carry the Multimat B23R-drive.

Mind the preferred rotational direction when installing the MULTIMAT B23R. In order to keep the live cycle of the drive please make sure that load is only applied in preferred rotational direction:

e.g. raising the table in preferred rotational direction, lowering in opposite direction.



Push the Multimat B23R between the carrying plates then screw at both sides with 3 screws (2) of the type M05x20 (DIN7500).

Then, move hexagon steel shaft into the location hole (3) of the Multimat B23R and, if necessary, protect with clamp rings on both sides of the drive. Clamp rings and hexagon steel shaft are not included in delivery.

After installing the drive, you can connect this to an adequate control unit.

Caution: The Multimat B23R is not equipped with a final cutoff. Depending on the kind of application, an adequate control unit might be necessary. We will be happy to assist you in choosing adequate system components.

MULTIMAT B23R

b) Electrical Connection

In the **Operating Instructions** to be issued by you, point out to the operator that if leads, in particular the **connection lead**, are **driven over** they could sustain damage. **Mechanical loads should also be avoided.**

When routing the leads make sure that they:

- cannot get caught up or trapped,
- are not subjected to mechanical pull,
- cannot get damaged in any other way.

Make sure that the leads, possibly incorporating a **strain relief with kink protecting**, are fastened to the application.

All the components are prewired ready to be plugged in and should only be connected as shown in the connecting plan (refer to the Installation Instructions supplied with the Dewert control units).

c) Dismantling

Operate the application to travel to the starting position and disconnect the drive from the mains supply. **Support drive** when removing **hexagon steel shaft** and **screws (2)** because it is released immediately.

5. Operation

For drawing up the Operating Instructions for the end product, you can use the specialist information described herein. Please bear in mind that these instructions are intended for you as a specialist and not for the possibly non-technically trained operator of the end product.

Attention!

- **The electric adjustment drive is not intended to be used by small children or the unsupervised infirm.**
- **The electric adjustment drive is not a toy for children to play with.**

a) Prerequisites

The **MULTIMAT B23** drive system is intended to be used only with a DEWERT control unit belonging to it.

In this connection please also follow the Installation Instructions supplied with the corresponding control unit.

b) Maintenance and Repairs

At regular intervals carry out the inspections in accordance with the BGV A2 (Instruction of the Professional Trade Association). The inspections must be performed by an electrical specialist.

The recommended inspection period in accordance with the BGV A2 is: **6 months**

- **Regular visual checks** for damage of all kinds

Check the housing for **cracks** and **fractures** and the connection lead for signs of **pinching** and **shearing-off**. Also check the **strain relief** with **kink protection**, in particular after each case of mechanical loading. Any **damaged connection leads** of equipment must be replaced by **the manufacturer** or **persons qualified** to do so (see page 3) in order to exclude hazards.

Check the limit switches by using the DEWERT control unit to make the drive travel to the end-of-travel positions.

Caution!

For Your Own Safety!

Shutdown in an emergency is achieved by pulling out the mains plug! The **mains plug** must therefore be **accessible at all times** when the system is in operation to ensure it can be quickly **pulled out of the wall socket** in an emergency.

Movement of the drive takes place via an rotational hexagon steel shaft. Please bear this in mind when designing your product:

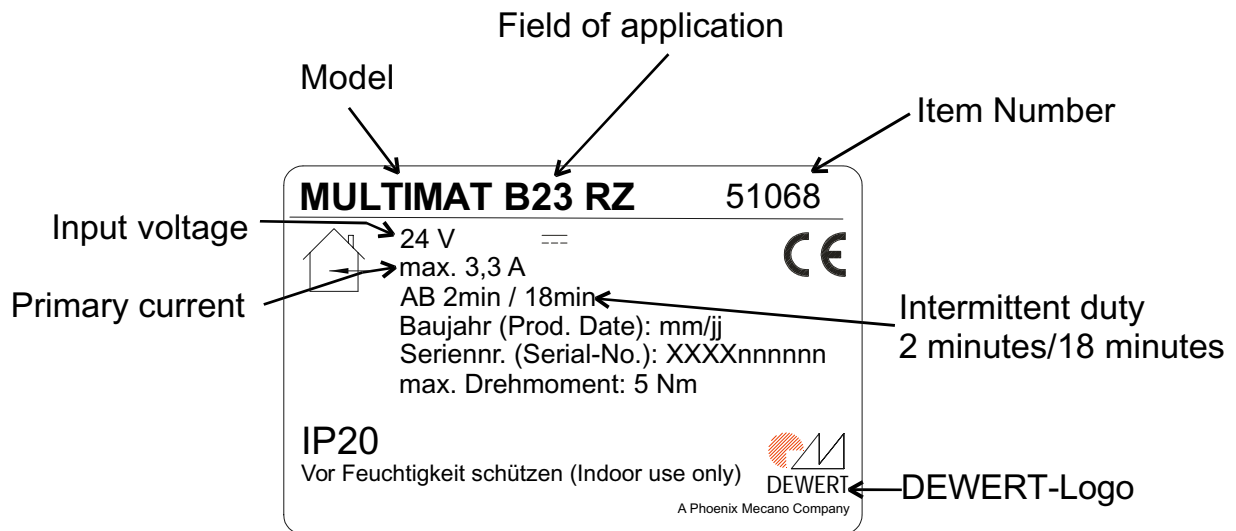
- After installing the **Multimat B23R** make sure that no shearing or trap/crush zones are accessible from the outside.

In the Operating Instructions to be drawn up by yourselves, it is essential that you draw the operator`s attention to the points mentioned here.

MULTIMAT B23R

6. Type Plate - Example

Each drive component carries a type plate giving the exact designation, item number and technical specifications (for explanation see following figure as an example).



Graphical Symbols



Conformity marks

IP20

Protection category



Use in dry rooms only



In order to guarantee the safety of DEWERT products, a seal is attached to all DEWERT products. Opening the product damages the seal, thereby indicating that the drive has been altered or tampered with. The drive may only be opened by specialist personnel holding the qualifications as described on page 3

7. Trouble-shooter's Guide to Detect and Eliminate Common Faults and Errors

The following table has been developed to help you detect and eliminate common faults and errors. If you come across a fault/error that is not listed here, please contact your supplier. All of these faults/errors may only be investigated and rectified by specialists holding the qualifications as described on page 3.

Problem	Possible Cause	Remedy
Handset or drive system without function	<ul style="list-style-type: none"> - Handset or drive system defective - No supply voltage 	<ul style="list-style-type: none"> - Contact your supplier/dealer - Connect to mains
Drives suddenly no longer respond, no movement takes place	<ul style="list-style-type: none"> - Thermoswitch on transformer or in the DEWERT controls has possibly been triggered - Temperature fuse in transformer has possibly been triggered - Instrument fuse has possibly been triggered - Lead (mains and/or handset/ slave drives) interrupted - No supply voltage 	<ul style="list-style-type: none"> - Leave the drive system in the rest position for approx. 20-30 minutes - Contact your supplier/dealer - Check the lead, if necessary restoring contact

MULTIMAT B23R

8. Cleaning

The **MULTIMAT B23R** drive system should be cleaned with a damp cloth using a proprietary cleaning agent suitable for **Polyamid 6**. Follow the instructions provided by the manufacturer of the respective cleaning agent used.

Before cleaning, always pull out the mains plug from the control unit!

Never clean the drive system in a wash tunnel or with a **high-pressure cleaner nor spray liquids onto it**. You otherwise risk damaging the equipment!

When **cleaning**, take care not to damage the drive system's **connection lead!**

The drive system meets the requirements of the IP20 protection category.

Do not use any solvents such as **benzene, alcohol** or similar substances.

9. Disposal

The **MULTIMAT B23R** drive system contains electronic components, cables, metal, plastic etc. The **MULTIMAT B23R** drive system should be disposed of in accordance with the environmental regulations applicable in the respective country. Information on this subject can also be obtained from:

Federal Association for
Disposal Management BDE
Behrenstraße 29
10117 Berlin
Germany
Phone: +49(0)30/59 00 33 5-0
www.bde-berlin.de

EC Manufacturer's Declaration

In accordance with Annex II B of the EC Machinery Directive (89/392/EC)

The Manufacturer:

DEWERT

Antriebs- und Systemtechnik GmbH

Weststr. 1

32278 Kirchlengern

Germany

hereby declares that the drive system described below

MUITIMAT B23R

is not a ready-to-use machine in accordance with the EC Machinery Directive and, therefore, does not fully comply with the requirements of the Directive!

This machine may not be put into operation until conformity with the above Directive of the entire machine, into which it is to be installed, has been declared!

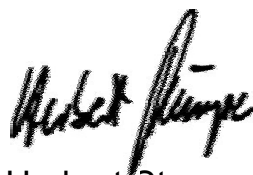
Partially applied harmonized standards:

Based on:

EN 292-1 Safety of Machines, Basic Terminology, Methods

EN 292-2 Safety of Machines, Guiding Technical Principles

Kirchlengern, 21th August 2006



Herbert Stumpe
Management

MULTIMAT **B23R**

EC Declarations

EC Declaration of Conformity

In accordance with Annex I of the EC Directive on Electromagnetic Compatibility 89/336/EEC, in accordance with Annex III of the EC Low-Voltage Directive 73/23/EEC

The Manufacturer:

DEWERT
Antriebs- und Systemtechnik GmbH
Weststr. 1
32278 Kirchlengern
Germany

hereby declares that the drive system described below

MUITIMAT B23R with DEWERT Control units

satisfies the following EC Directives:

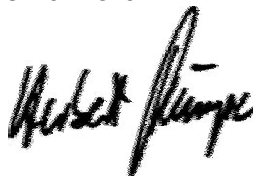
Directive on Electromagnetic Compatibility 89/336/EEC
(last amended by 93/68/EEC)

Low-Voltage Directive 73/23/EEC
(last amended by 93/68/EEC)

Applied Standards:

EN 60335-1
EN 55014-1
EN 55014-2
EN 61000-3-2
EN 61000-3-3

Constructional changes which affect the technical data stated in the Installation Instructions as well as the designated use, in other words which alter the drive system in a significant extent, make this Declaration of Conformity null and void!



Kirchlengern, 21th August 2006

Herbert Stumpe
Management

Notes

DEWERT
Antriebs- und Systemtechnik GmbH
Weststraße 1
32278 Kirchlengern
Phone: +49(0)5223/979-0
Fax: +49(0)5223/75182
<http://www.dewert.de>
Info@dewert.de